

2020 ETCHELLS LONG ISLAND SOUND CHAMPIONSHIP

at

Shelter Island Yacht Club

12 Chequit Ave.

Shelter Island Heights NY 11965

(631) 749 - 0888

September 24-27, 2020

SAILING INSTRUCTIONS

The Organizing Authority (OA) is The Shelter Island Yacht Club in conjunction with the Etchells Fleet 15

1. RULES

- 1.1 The Regatta will be governed by the rules as defined in the *Racing Rules of Sailing* (RRS).
- 1.2 The Regatta is an Etchells Class C sanctioned event under Appendix A of the International Etchells Class Association (IECA) Rules. The IECA Rules and Regulations will apply except as modified by the Sailing Instructions.
- 1.3 All competing boats shall carry an operating, handheld VHF radio for safety purposes and race committee communication.
- 1.4 The Jury may impose suitable penalties, other than disqualification, for violations of non-Part 2 rules. This changes RRS 64.1.
- 1.5 No US Sailing Prescriptions will apply except RRS 61.4, Appendix V1 and prescriptions to RRS 60.3, 63.2, 67 and 76.1, which are provided in Attachment A

2. NOTICE BOARD

- 2.1 The official notice board is located on the South Deck in the Main Clubhouse.

3. CHANGES TO SAILING INSTRUCTIONS OR SCHEDULE OF RACES

- 3.1 Any change to the sailing instructions will be posted before 0900 hours on the day it will take effect.
- 3.2 Any change to the schedule of races will be posted by 2000 hours on the day before it will take effect.

4. SIGNALS MADE ASHORE

- 4.1 Signals made ashore will be displayed on the SIYC flagpole.
- 4.2 When flag AP is displayed ashore, “1 minute” is replaced with “not less than 60 minutes” in race signal AP. This changes RRS Race Signals.

5. REGISTRATION AND MEASUREMENT

- 5.1 Registration and Measurement formalities as detailed in the Notice of Race must be completed by 1800 hours on Thursday, September 24th.
- 5.2 All boats will be issued bow numbers at registration. Bow numbers shall be attached to the forward part of each side of each boat, with the after part of the bow number to be no more than one meter from the hull datum point as defined in class rule D.2.4 (a) and the top of the bow number to be no more than 20 mm below the gunwale. No numbers may wrap around the stem or the gunwale and the spacing between characters shall be 70 mm.

6. SCHEDULE OF EVENTS AND RACING

- 6.1 Schedule:

Thursday, Sept 24th	09:00 – 18:00 14:00 18:00 18:05	Registration, Weigh-in and Launching Practice Race All Etchells afloat Competitors’ Briefing
Friday, Sept 25th	07:30-09:30 09:30 12:00	Supplemental crew weigh-in Competitors’ Briefing Harbor Start
Saturday, Sept 26th	09:30 11:00	Competitors’ Briefing Harbor Start
Sunday, Sept 27th	09:30 11:00 16:00 TBD TBD	Competitors’ Briefing Harbor Start No warning signal after Haul-out Awards

- 6.2 Three races each day are scheduled for Friday and Saturday and two races are scheduled for Sunday. One additional race per day may be sailed, provided that the fleet does not become more than one race ahead of schedule. There will be a maximum of eight (8) races completed.

- 6.3 When more than one (1) race will be held on the same day, the warning signal for each succeeding race will be made as soon as practicable. To alert boats that another race will begin soon the RC will announce on the VHF channel 72 the time for the next warning.
- 6.4 On the final day of the regatta, no warning signal for the final race will be made after 1600 hours.

7. CLASS FLAG

- 7.1 The class flag will be the Etchells Class insignia on a white background.

8. RACING AREA

- 8.1 All races will be sailed in the vicinity of, and the waters surrounding, Shelter Island.
- 8.2 The specific location for the starting area will be communicated at the Competitor's Briefing. See Attachment B, Gardiner's Bay and Orient Harbor.

9. COURSES

- 9.1 The courses will be windward/leeward courses using inflatable drop marks.
- 9.2 The diagrams in Attachment C show the course configuration, including the order in which marks are to be passed, and the side on which each mark is to be left.
- 9.2 The course to be sailed will be designated by displaying the course number on a board from the RC signal boat no later than the warning signal.
- 9.3 The race committee signal boat may display the approximate compass bearing and distance from the Starting Line to Mark 1.
- 9.4 When there is a gate, boats shall sail between the gate marks from the direction of the previous mark and round either gate mark. If there is only one leeward mark it shall be left to Port.

10. MARKS

- 10.1 All weather marks, gates and leeward marks will be tetrahedrons.
- 10.2 Offset marks will be pink balls.
- 10.3 The starting and finishing lines are described in 11.2 and 13.1, respectively.

11. THE START

- 11.1 Races will be started using RRS 26.
- 11.2 The Starting Line will be between staffs displaying an orange flag on the race committee vessels at each end of the starting line.
- 11.3 A boat starting later than 5 minutes after the starting signal will be scored DNS. This changes RRS 63.1, A4.1 and A.5.
- 11.4 As an unofficial race committee action, the race committee will attempt to notify OCS, UFD and BFD boats by bow number or sail number on VHF Channel 72 as a courtesy to

competitors and coaches after all boats have started. For Black Flag starts, the bow or sail numbers of offending boats will be posted before the next warning signal if the race is recalled or abandoned. The official list of race committee actions will be posted on the notice board.

12. CHANGES TO THE NEXT LEG OF THE COURSE

- 12.1 To change the next leg of the course, the race committee will move the original mark (or the finishing line) to a new position. The change will be signaled before the leading boat has begun the leg, although the mark (or finishing line) may not yet be in the new position. Any mark to be rounded after rounding the moved mark may be relocated without further signaling to maintain the course configuration. This changes RRS 33.

13. THE FINISH

- 13.1 The finishing line will be between staffs displaying an orange flag on the race committee vessels at each end of the finishing line.

14. PENALTY SYSTEM

- 14.1 US Sailing Prescription APPENDIX V1 shall apply.

15. TIME LIMITS

- 15.1 If no boat has passed the first windward mark 1 hour after the starting signal, the race shall be abandoned.
- 15.2 Boats failing to finish within 45 minutes after the first boat sails the course and finishes will be scored Did Not Finish. This changes RRS 35, A4.1 and A.5.

16. PROTESTS AND REQUESTS FOR REDRESS

- 16.1 Protest forms are available upstairs in the SIYC Sailing Center. Protests shall be delivered there within 30 minutes of the last boat arriving to shore. This time will be posted on the official notice board.
- 16.2 Notices will be posted within 30 minutes of the protest time limit to inform competitors of hearings in which they are parties or named as witnesses. Hearings will be held in the designated room at SIYC Sailing Center.
- 16.3 Notices of protests by the race committee or the protest committee will be posted within the protest time limit on the official notice board to inform boats under RRS 61.1(b).
- 16.4 For infringements of the rules other than Part 2, the PC may award a lesser penalty than DSQ.
- 16.5 For purposes of RRS 64.3 (b), the “authority responsible” is the Class International Governing Committee.

- 16.6 Breaches of instructions 5.2, 18, 19, 23, 24, 25 will not be grounds for protest by a boat. This changes RRS 60.1(a). Penalties for these breaches may be less than disqualification if the protest committee so decides.
- 16.7 On the last day of the regatta:
- (a) a request for reopening a hearing shall be delivered within the protest time limit if the party requesting reopening was informed of the decision on the previous day;
 - (b) a request for reopening a hearing held on the last day shall be delivered no later than 30 minutes after the party requesting reopening was informed of the decision on that day;
 - (c) the time limit to request redress based upon an action or omission of the race committee or protest committee shall be 30 minutes after the final results are posted. This changes RRS 62.

17. SCORING

- 10.1 One race will constitute a regatta.
- 10.2 The Low Point System of RRS Appendix A will apply.
- 10.3 When five (5) races or less have been completed, a boat's series score will be the total of her race scores.
- 10.4 When six (6) or more races have been completed, a boat's series score will be the total of her race scores excluding her worst score.

18. SAFETY REGULATIONS

- 18.1 A boat that retires from a race shall notify the race committee as soon as possible.

19. REPLACEMENT OF CREW OR EQUIPMENT

- 19.1 Substitution of crew will not be allowed without prior written approval of the protest committee, and such requests shall be submitted to the race committee for verification of eligibility and crew weight of the substitute crew. Emergency medical replacements , will be heard on a case by case basis.

20. EQUIPMENT AND MEASUREMENT CHECKS

- 20.1 A boat or equipment may be inspected at any time for compliance with the class rules and sailing instructions which may include RRS 43 and Class Rules C.2.2 and C.3.2.
- 20.2 On the water, a boat can be instructed by the race committee to proceed immediately to a designated area for inspection.

21. CREW WEIGHING

- 21.1 The individual weights of each crew member and the total combined crew weight of the entire crew, including skipper, shall be determined prior to racing and the total combined weight of crew members for each boat will be posted on the official notice board.
- 21.2 Crews shall be weighed wearing light clothing, the minimum being outerwear shorts and t-shirt.

22. OFFICIAL BOATS

Official boats will be marked as follows:

- RC: US Sailing Blue RC flag.
- Media Boats: Yellow flag with black M.
- Safety: Green and White
- PC: Code flag J or US Sailing Judge flag

23. COACH AND SUPPORT BOATS

- 23.1 Coach and support boats as well as designated responsible person must be registered with the Organizing Authority prior to acting as a coach or support boat and shall be marked with identifying flags issued by the Organizing Authority. Boats shall display identifying flags at all times while they are acting as a coach or support boat.
- 23.2 All registered coach and support boats will carry on board and operate while on the water a VHF radio capable of transmitting and receiving on VHF Channels and agree to assist the race committee if directed to do so.
- 23.3 Competitors shall have no communication with, and boats shall not be tied to, coach or support boats 10 minutes before the first scheduled Warning Signal of the day until racing has been concluded for the day (Discretionary Penalty applies).
- 23.4 The 10 minute notification method will be by hail on VHF channel 72. Between races, coach and support boats shall not approach, communicate with or transfer provisions or equipment to or from their supported boats unless in a medical or emergency requirement threatening the health of the crew or the flotation of the boat and only with the expressed permission of the race committee.
- 23.5 Registered coach and support boats and their personnel shall stay at least 100 meters below the starting line from the time of the Preparatory Signal until five minutes after the start of any race. After this time, coach and support boats may then proceed parallel to the course on the starboard side of the course facing the wind at a distance of at least 100 meters outside areas where boats are racing. Coach and support boats shall not go above the weather marks or the Course 1 finishing line or below the leeward marks or the Course 2 finishing line at any other time while boats are racing.
- 23.6 Any breach of SI 23.1, 23.2, 23.3 or 23.4 by a coach or support boat may result in a penalty being applied to any or all boats serviced by that coach or support boat. The penalty may be disqualification, or some other penalty as determined by the protest committee.

- 23.7 Coach and support boats shall, when requested by the race committee, tow or assist boats not associated with them. Coach and support boats will monitor VHF channel 72 and if circumstances require a verbal permission by the RC via VHF with post written notice this is acceptable. Coach and support boats shall follow all instructions from the race committee.

24. HAUL-OUT RESTRICTIONS

- 24.1 A boat shall be afloat no later than 18:00 on Thursday, September 24, and shall not be hauled out during the regatta except with and according to the terms of prior written permission of the race committee.
- 24.2 Plastic pools or their equivalent shall not be used around competing yachts between the close of registration and the end of the regatta.
- 24.3 All boats will be given a haul out number and color to help with haul-out process.

25. RADIO COMMUNICATIONS

- 25.1 Except in an emergency, a boat shall neither make radio transmissions while racing nor receive radio communications not available to all boats. This restriction also applies to mobile telephones and other electronic devices.
- 25.2 The race committee intends to use VHF marine radio frequencies to broadcast courtesy information to competitors. The race committee's VHF channel will be provided at the Competitors' Briefing and posted on the official notice board.
- 25.3 All competitors shall carry a VHF radio per the Etchells class rules.

26. PRIZES

- 26.1 Awards shall be provided to the top five boats in the regatta and top three Corinthian teams. Additional prizes may be given at the discretion of the Organizing Authority.
- 26.3 The Corinthian Trophy will be awarded to the top Corinthian team.

27. DISCLAIMER OF LIABILITY

Competitors participate in the regatta entirely at their own risk. See RRS rule 4, Decision to Race. The Organizing Authority will not accept any liability for material damage or personal injury or death sustained in conjunction with or prior to, during, or after the regatta.

28. INSURANCE

Each participating boat shall be insured with valid third-party liability insurance with a minimum cover of \$300,000 per incident or the equivalent.

29. FURTHER INFORMATION

The event website can be located via the SIYC website (www.siyc.com) and Yacht Scoring (www.yachtscoring.com).

For further information, please contact

Event Chair: Steve Schram-steves@gowrie.com (917-855-1569)

ATTACHMENT A: US SAILING PRESCRIPTIONS

The following US Sailing Prescriptions shall apply at the 2020 International Etchells Long Island Sound Championship

RRS 61.4. Fees for Protests and Requests for Redress

US Sailing prescribes that no fees shall be charged for protests or requests for redress.

Appendix V1: Penalty at the Time of an Incident

The first two sentences of rule 44.1 are changed to read:

A boat may take a One-Turn Penalty when she may have broken one or more rules of Part 2 or Rule 31 in an incident while racing. However, when she may have broken one or more rules of Part 2 while in the zone around a mark other than a starting mark, her penalty shall be a Two-turns Penalty.

RRS 60.3. After RRS 60.3 add:

(b) request redress for a boat or call a hearing to consider redress

RRS 63.2. After RRS 63.2 add:

US Sailing prescribes that when redress has been requested or is to be considered for one or more boats:

- (a) Any other boat may participate in the hearing
- (b) The PC shall make a reasonable attempt to notify all boats of the time and place of the hearing and the reason for the request or for considering redress, and boats shall be allowed reasonable time to prepare for the hearing.
- (c) The PC shall request redress for the other boats that participate in the hearing or request in writing to do so, making them parties to the hearing. It need not state a reason for such request. This changes RRS 62.2.

RRS 67. After RRS 67 add:

US Sailing prescribes that:

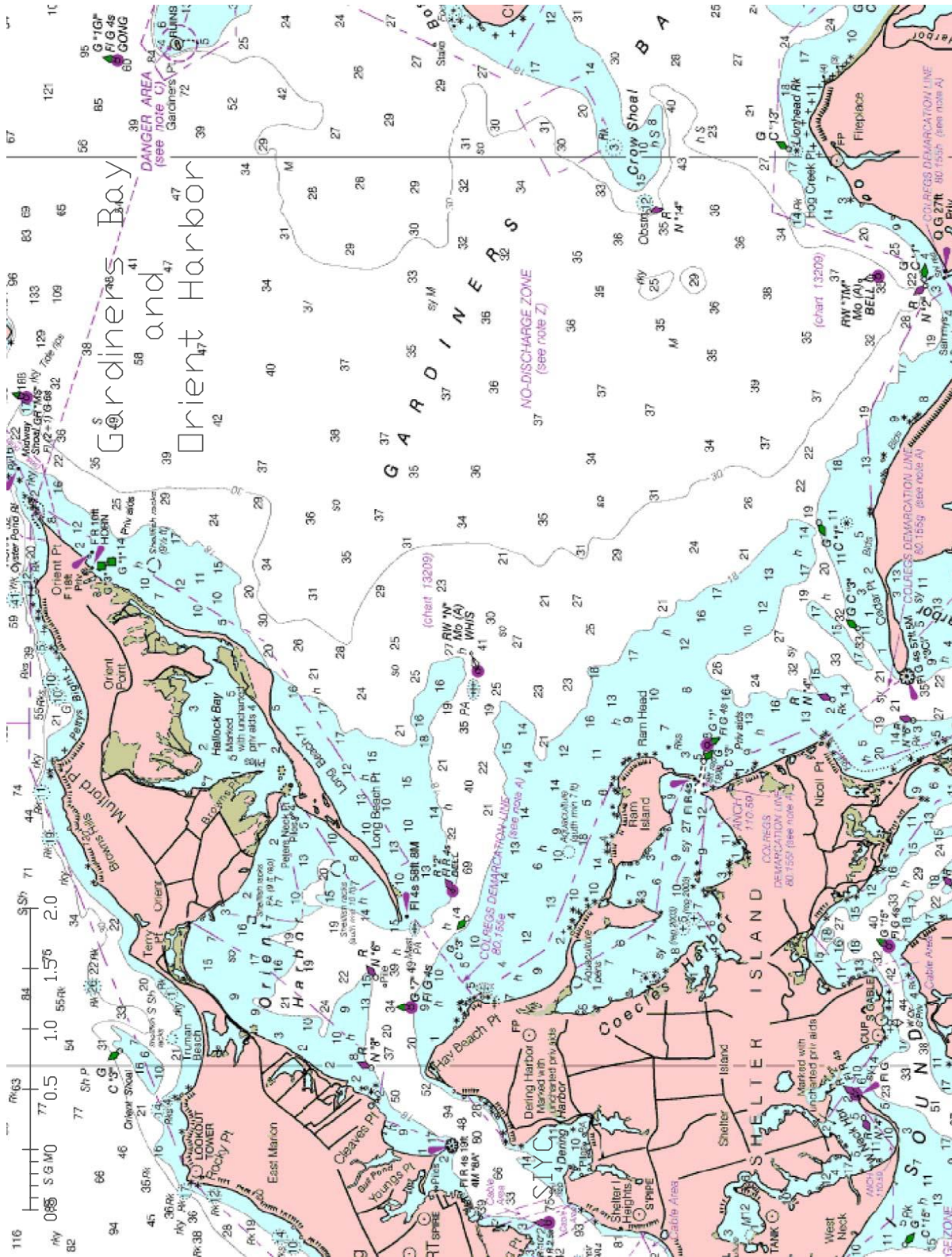
- (a) A boat that retires from a race or accepts a penalty does not, by that action alone, admit liability for damages.
- (b) A PC shall find facts and make decisions only in compliance with the rules. No PC or US Sailing appeal authority shall adjudicate any claim for damages. Such a claim is subject to the jurisdiction of the courts.

(c) A basic purpose of the rules is to prevent contact between boats. By participating in an event governed by the rules, a boat agrees that responsibility for damages arising from any breach of the rules shall be based on fault as determined by application of the rules, and that she shall not be governed by the legal doctrine of 'assumption of risk' for monetary damages resulting from contact with other boats.

RRS 76.1. After RRS 76.1 add:

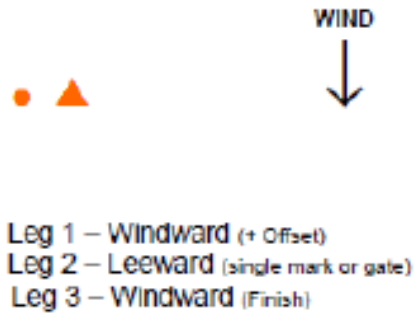
US Sailing prescribes that an OA or RC shall not reject or cancel the entry of a boat or exclude a competitor eligible under the notice of race and sailing instructions for an arbitrary or capricious reason or for reason of race, color, religion, national origin, gender, sexual orientation, or age.

ATTACHMENT B: GARDINER'S BAY & ORIENT HARBOR

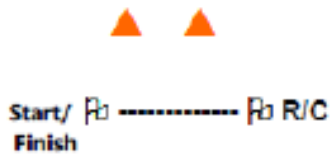


ATTACHMENT C: COURSE DIAGRAMS

COURSE # 3



COURSE # 4



COURSE # 5

